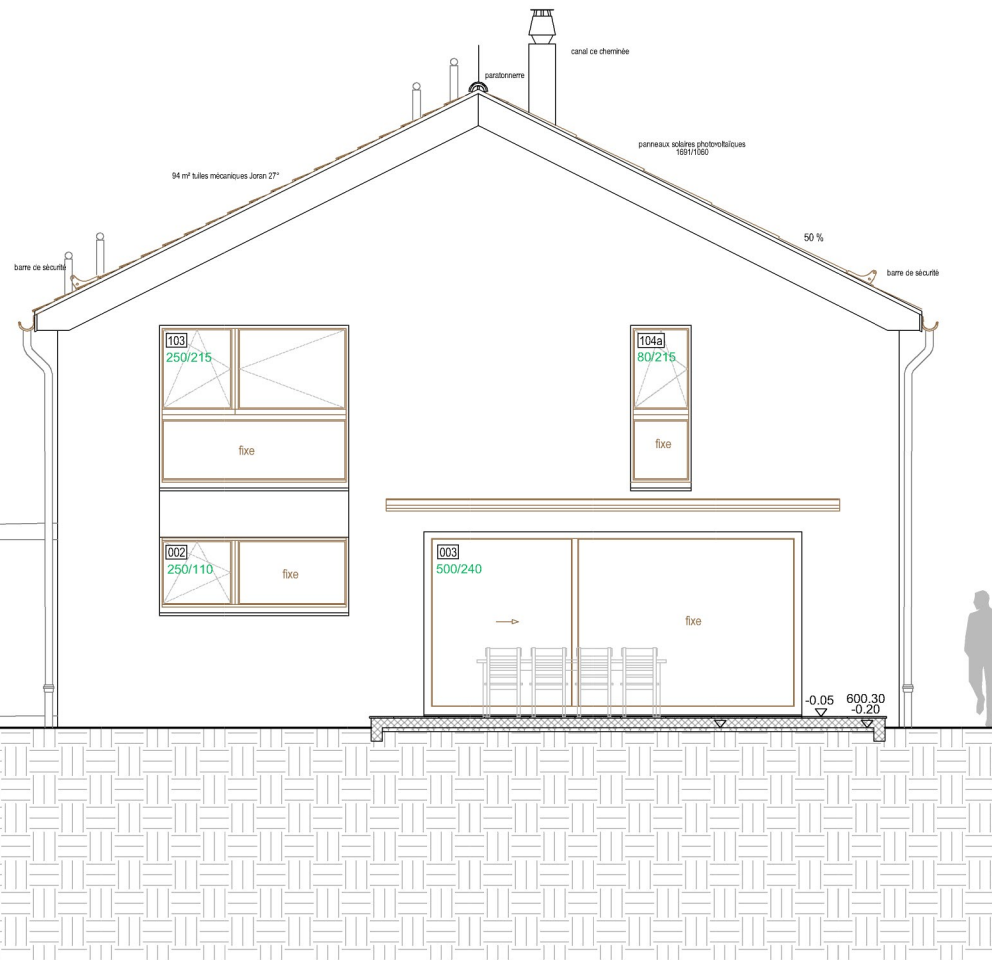


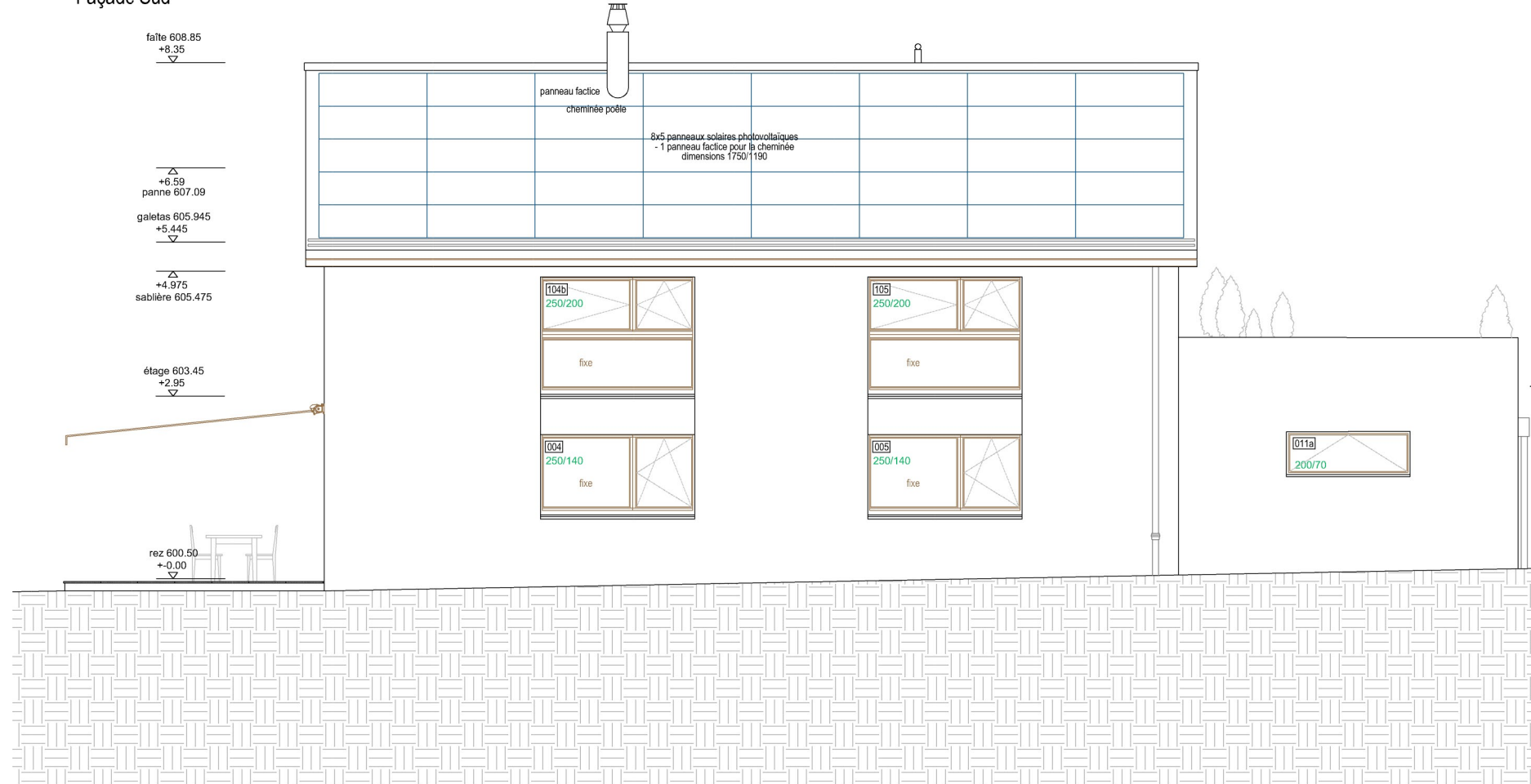
Façade Ouest

falte 608.85
 +8.35
 +6.59
 panne 607.09
 gaelas 605.945
 +5.445
 +4.975
 sablière 605.475
 étage 603.45
 +2.95
 rez 600.50
 +0.00



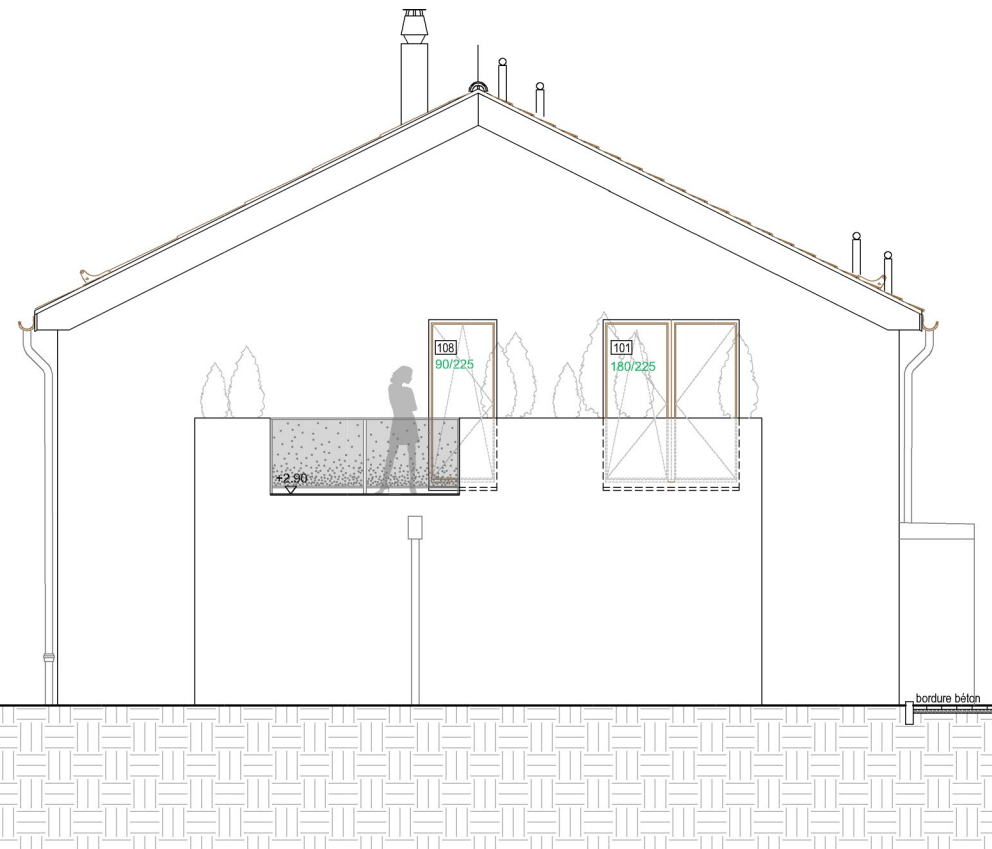
Façade Sud

falte 608.85
 +8.35
 +6.59
 panne 607.09
 gaelas 605.945
 +5.445
 +4.975
 sablière 605.475
 étage 603.45
 +2.95
 rez 600.50
 +0.00



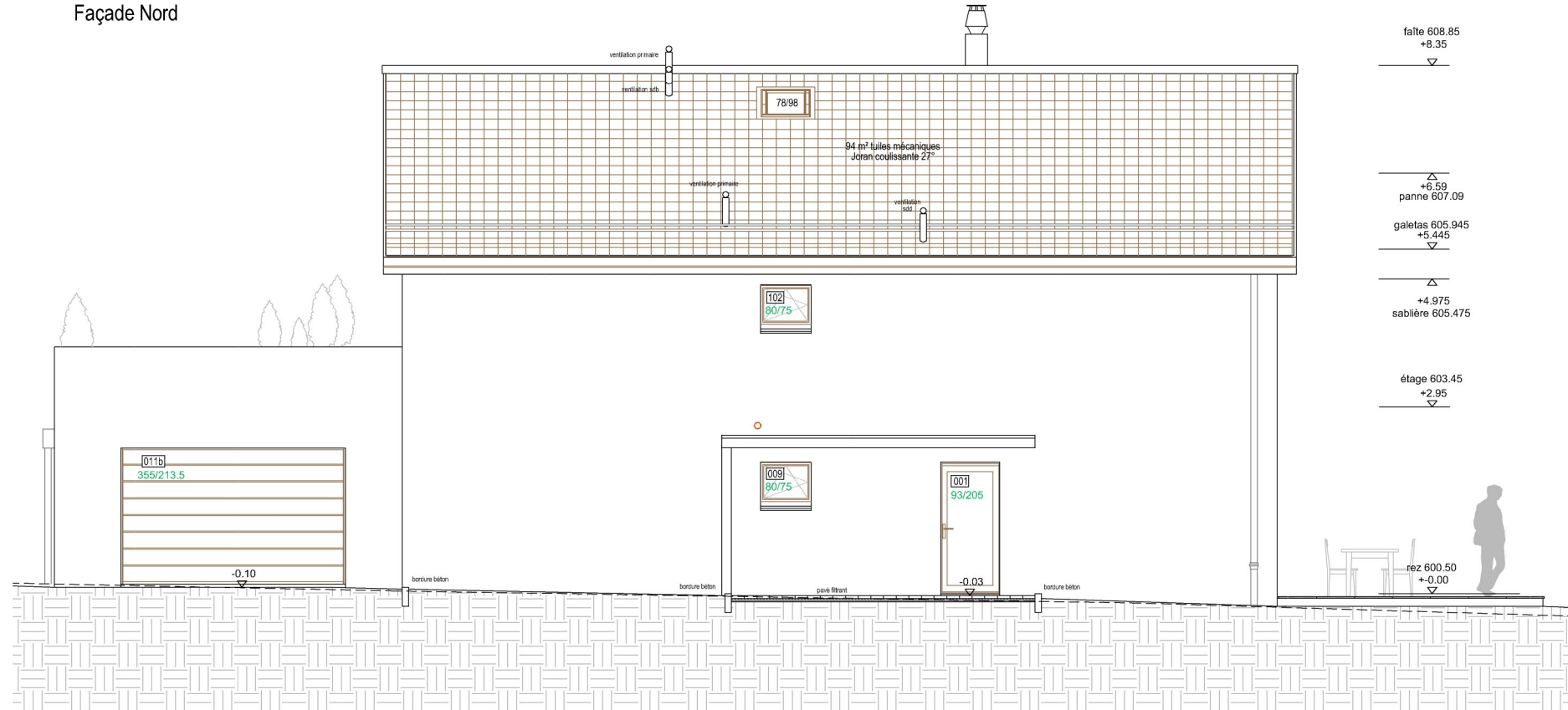
Façade Est

falte 608.85
 +8.35
 +6.59
 panne 607.09
 gaelas 605.945
 +5.445
 +4.975
 sablière 605.475
 étage 603.45
 +2.95
 rez 600.50
 +0.00



Façade Nord

falte 608.85
 +8.35
 +6.59
 panne 607.09
 gaelas 605.945
 +5.445
 +4.975
 sablière 605.475
 étage 603.45
 +2.95
 rez 600.50
 +0.00



Romanel-sur-Lausanne		Construction d'une maison individuelle	EXECUTION
échelle 1:100	format A3	dessin CdS	date : 11.01.2022 mise à jour : 05.09.2022
Atelier d'architecture Mikulas Sàrl, rte de Semsales 16, 1613 Maraçon - tél. 021 653 06 74 - info@mikulas.ch - www.mikulas.ch		ÉLEVATIONS	215.35

